



# PORTLAND'S *Rain* OF GLASS, INC.

A non-profit organization formed to stimulate interest in collectible glass and to provide educational resources and events for the members and the community at large.

## DECEMBER

**WHERE:** Friendship Masonic Center  
5626 NE Alameda Street  
Portland, Oregon 97213  
N.E. 57<sup>th</sup> & Sandy

**WHEN:** Tuesday, December 19, 2006,  
6:00 to 9:00 p.m.  
(Library open at 6:00 p.m.)

**GREETERS:** Dwayne Cole and Sally Cole  
(Come early to set up—6:00 p.m.)

**SPECIAL:** DECEMBER HOLIDAY POTLUCK

**FEATURED TOPIC:** Festive Place Settings. Bring your favorite Place Setting

Bring a potluck dish to share with club members. Bring your favorite Holiday Place Settings to share with others. Club will provide Ham and/or Turkey. Paper plates and utensils available.

*Pictured above is the American Formal Table Setting style from Better Homes and Gardens.*

**REFRESHMENTS:** Contact Michele Kemp if you can help.

**BOARD MEETING:** Tuesday, December 12,  
At the Friendship Masonic Center,  
7:00 p.m.

**ALL MEMBERS WELCOME**

### UPCOMING EVENTS

#### DECEMBER

2-3 – Picc-A-Dilly Flea Market

3 – Polk Flea Market, Rickreall

10 – Medford Flea Market

10 – Rose City Collectors Market, Portland

10 – Salem Collectors Market  
Vintage Holiday, Fairgrounds

#### JANUARY

13-14 – Palmer Wirfs, Clark Co.  
Fairgrounds, Washington

27-28:

*Portland Rain of Glass  
SHOW AND SALE,  
Washington County  
Fairgrounds, Hillsboro,  
Sat. Early Bird 8:30-10 a.m.,  
Sat., 10-5, Sun., 10-4.*

#### FEBRUARY

9-19 – Lincoln City Antique Week

Visit the Portland's Rain of Glass Website for more interesting Club news:

[www.rainofglass.com](http://www.rainofglass.com)

Mailing Address:

Portland's Rain of Glass  
C/O Friendship Masonic  
Center, 5626 N.E. Alameda  
Street, Portland, OR, 97213





## **Membership in Portland's Rain of Glass:**

\$22.00 for Individual, \$8.00 for each additional member at same address.

Your newsletter mailing label tells the date your membership expires. You may pay on or before that date. You may pay at Board or General Meetings. No dues will be processed during the Show and Sale or at Rally. You may use Glass Bucks to pay for membership.

You may also mail dues to:

Cindy Thomas  
Membership Chairman  
795 Corby St.  
Woodburn, OR 97071  
or Friendship Masonic Center  
5626 NE Alameda  
Portland, OR 97213

Each member receives a receipt, membership card and library card and monthly newsletter as well as other membership benefits.

We appreciate each and every member. Our members make this organization strong. If you would like to share your talents, please contact any Board Member or Committee Chair.

### **Portland's Rain of Glass, Inc.**

publishes 12 newsletters a year.

*If you would like to contribute an article, contact:*

Barbara Coleman at 503-281-1823,  
colelee @easystreet.com

AND Jewell Gowan at 503-510-9137,  
jewellsbks@aol.com

AND Cindy Thomas at 503-981-8330,  
cst@wbcable.net

## **❖ INSIDE ❖**

### ***Portland's Rain of Glass, Inc.***

- ◆ Calendar of Events
- ◆ President's Report
- ◆ Avon Cape Cod by Sharon Staley
- ◆ Amber Glass Night
- ◆ Annual Food Drive
- ◆ Multnomah County Library  
Glass Display
- ◆ January 2007 Show and Sale
  - ◆ Collectors Glass Rally

## PRESIDENT'S REPORT

I hope everyone had a great Thanksgiving. I spent Thanksgiving in California with 20 kids in the house! I forgave my friends for not putting out their best glassware under the circumstances. It worked beautifully though. The kids were all very well behaved. Nothing got broken. They COULD have used their best glass. It would have been fine.

And now, the REALLY big holiday starts. I would imagine that Christmas is probably the favorite holiday of glass lovers. What attracts many of us to the medium of glass is its sparkle, its clarity, its color, and its ability to take interesting shapes. These properties seem to be found in abundance in all Christmas decor. Glass fits right in with the spirit of the holiday. There is a reason that Christmas tree ornaments are (usually) made of glass. And wouldn't the topic of glass ornaments make a good December program for us? (oldtimers forgive me if that has already been done). I know there are many people who take their antique Christmas ornament collecting very seriously.

I look forward to seeing all of you at our annual Christmas potluck Dec 19th. Merry Christmas to all!

JACK

## November Winners

There were many glass winners last month! Donna Anderson won a Green Relish Tray, Carol Carder won a Green Glass Boot, and Gyrid Hyde-Towle won a green Glass Hat. Two amber Patrician depression plates were won by Dan Haake. Delene Haake won a cut blue vase. Karin Nissly won a clear candy dish made by Viking. Elise Hamilton and Alene Dolan won a Princess House apple. A tall art glass piece was won by Mark Moore. **Congratulations to all the winners.** Thanks to Diana Jones for gathering all that glass!

**DON'T FORGET TO SIGN  
UP TO VOLUNTEER AT THE  
SHOW  
JANUARY 27-28  
AT THE WASHINGTON  
COUNTY FAIRGROUNDS,  
HILLSBORO  
Several slots  
are still available!**

If you can't volunteer to work, be sure to come to the show and support our dealers! If you are a member in good standing, you may come in for free during regular show hours, Saturday 10:00 to 5:00, Sunday 10:00 to 4:00 and for half price (\$5.00) during the EarlyBird PreSale Saturday 8:30--10:00 A.M.

If you have helped either before, during or after the show, you may come in for free during regular show hours, Saturday 10:00 to 5:00, Sunday 10:00 to 4:00 and for FREE during the EarlyBird PreSale Saturday 8:30--10:00 A.M.

**CONTACT CAROLE WHITE,  
503-901-0606,  
cbessw@aol.com  
FOR MORE INFO.**



Photos by Neal Skibinski



**NOVEMBER MEETING TOPIC:**

**AVON CAPE COD with  
SHARON STALEY**



Avon was started in 1886 under the name of California Perfume Company. An Avon branch was started in 1928, and in 1939 both companies merged in to the same name of Avon.

Avon commissioned Wheaton Glass Company (Millville NJ) to make decorative decanters for them.

In 1974 Avon began plans to offer a glass dinnerware line. (This was possibly to compete with Princess House & Tiara who also had dinnerware.) The original concepts for the design were drawn at Avon. Wheaton Glass Company made corrections and additions and sent the revised drawings back to Avon for final approval. Wheaton Glass developed and produced the moulds for the Cape Cod dishes. 4-6 moulds for each design were held in reserve to use as replacements in case of needed repairs. There are 39 pieces of dinnerware, plus accessories. There were 20 - 28 moulds per item with some items being produced for several years.

The pattern was inspired by the classic Roman Rosette and called the Cape Cod Collection. Two methods were used in moulding the glassware.

Five items were produced on Emhart Individual Section Glass Forming Machines. They were a combination of five or six smaller machines or sections, running independently of the others. The pieces made by this process were: Tall Candlesticks, Decanter, Napkin rings, Pitcher, Salt & Pepper Shakers.

All other items were made on a 16-mould rotary press machine. The mould machine resembles a carousel with a large circular-looking table with the moulds set on the edge in equal intervals.

Two color designs were used for the boxes, white boxes with either gray & gold, or red and gold. A history of the Cape Cod name was given on each.

The only item to go outside of Wheaton Glass was the dessert bowl. Anchor Hocking received a commission and developed a pattern and moulds. Anchor Hocking received notice to send all moulds and materials to Wheaton Glass, where it was issued a new design number and the mould equipment altered to adapt to Wheaton machines.

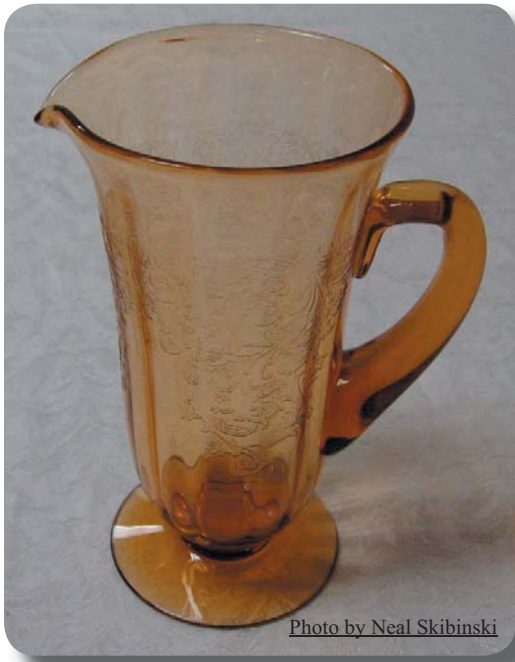
The Dessert server was originally to have a glass handle. Too many problems occurred and a plastic handle was made in the Wheaton plastic division. The server handle and salt & pepper tops and decanter liner were made in red plastic. The tall candles and cruet were made in clear plastic. The metal blade for the dessert server was made by Regent Sheffield of England.

The Cape Cod dinnerware was produced from 1974 to 1992 when it was discontinued.

-  
*Written by  
Sharon Staley*



## AMBER GLASS NIGHT



Rain of Glass celebrated Thanksgiving early with Amber Glass Night. Amber was one of the three most popular colors in the Depression Era. Most Depression Glass and Elegant Glass patterns were made in amber as well as pink, green and other colors.

Today, amber definitely has its supporters for many reasons. Some of us just like it for itself, some buy it because they want the piece and haven't found it in another color yet, many want pieces in every color a factory made, others like it because it complements today's neutral home décor, and some pick it up because it's often less expensive than other colors.

Whatever their reasons, PROG members brought several amber favorites to share with the group.

The piece that provoked the most discussion was Janice Wallace's Heisey amber tumbler made for the Harvey House restaurant chain. Harvey restaurants were located at train stops along the Atchison, Topeka and Santa Fe Railway beginning in 1870. By 1885 there were 17 Harvey Houses, and at their peak there were 84. The Harvey Houses offered good food at reasonable prices in a nice, clean atmosphere, and the waitresses were easy on the eyes! If you haven't seen the Judy Garland movie "The Harvey Girls," you should check it out. Heisey contracted to provide nice glassware for the chain, and today these historical pieces are extremely desirable. Janice says they are not marked Harvey House—you just have to study study study to learn what to look for!!

Among those who brought interesting pieces to share were:

Bob Carlson, Paden City Irwin pattern candy box

Sally Cole, Daisy & Button with Thumbprint

Diana Jones, 1850's amber whiskey bottle

John & Michele Kemp, blown decanter

Ed Martin, Colonial straw holder

Ron & Donna Miller, New Martinsville Moondrops decanter & 3 different cordials

Mark Moore, Bagley vase

Karin Nissly, Kosta amber vase from Sweden

Neal Skibinski, Fostoria Acanthus pattern jug & Royal pattern creamer with applied handle

Lois Stevenson, Czech divided relish resembling Candlewick

Janice Wallace, Heisey Harvey House amber tumbler

Jack Bookwalter entrusted his Sowerby console bowl with matching frog to yours truly, who had to work late that night and arrived too late to set out his piece or her own contributions. Look for them at Show & Tell in December!!

*Submitted by Carole White*

**15<sup>th</sup> Annual**  
**“Collectors Glass Rally”**  
**June 28, 29 & 30th**

Hi everyone! We held our first planning meeting and came up with the new name for our rally - **Collectors Glass Rally**. The committee felt this is a better description of our rally and may help to draw more outside interest. The theme for this year is going to be **“Wide World of Glass”**, an appropriate description since we are expanding our Rally to include international glass.

We are currently trying to finalize our speakers for the Collectors Glass Rally and should have the line up of speaker by the time you get your January newsletter.

If you have not heard yet we are holding the Collectors Glass Rally at the Monarch Hotel in Clackamas again this year. We are going to try to expand our auction again this year by getting donations from business for dinners, lodging, gift certificates, etc. As always glass will be the main focus for the auction items so we also need good quality glass donations.

This is where we need your help to acquire as many donations as possible to make our Collectors Glass Rally successful. Please ask at your work or businesses you patronize for donations to our Collectors Glass Rally, Remind everyone that PROG is a Federally qualified 501 (c) 3 Non-Profit Organization (fully tax deductible). Contact Bob Carlson or Ed Martin with any donations you acquire. In exchange for a donation we will advertise the donors business or name in our Rally Program and website depending on the amount donated.

The next Rally committee meeting will be at our home in Milwaukie on **Thursday Dec 7<sup>th</sup>, we will have a light dinner around 6:30pm and the meeting will start at 7:00pm. If you want to be part of the planning committee please email me at [ensmartin@comcast.net](mailto:ensmartin@comcast.net)**

**or call (503) 659-3990.**

I would love to hear any ideas you have about how we can make the Rally better.

Thanks in advance for your help.

Ed Martin

Rally Chairman



Photo by Neal Skibinski



BE SURE TO VISIT THE  
**PORTLAND'S RAIN  
OF GLASS  
DISPLAY**

IN THE  
COLLINS GALLERY  
AT THE MULTNOMAH  
COUNTY LIBRARY  
IN DOWNTOWN PORTLAND

**DECEMBER 28, 2006  
to  
JANUARY 28, 2007**

There will be a reception with  
refreshments and a lecture on  
Glass 101

by Neal Skibinski  
and Dennis Headrick  
at 3:00 P.M.  
on Saturday, January 6, 2007

**COME AND BRING  
YOUR FRIENDS!!**

